

NEW TECHNOLOGY



DDS Belt

Ambulatory Traction Belt w/detachable Rigid Panels

DDS 500 - LUMBAR TRACTION

Disc Disease Solutions is a revolutionary approach in the treatment of lower back and neck pain due to spinal diseases and injuries.

A unique and patented air traction design sets it apart from all other ambulatory supports. DDS is thin, lightweight and easy to use; it offers a high degree of mobility, alleviating, treating, as well as preventing back and neck pain.



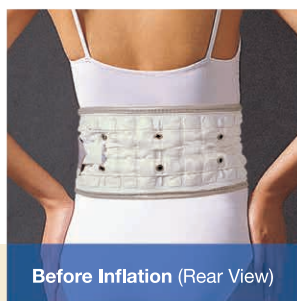
Disc Disease Solutions, Inc.



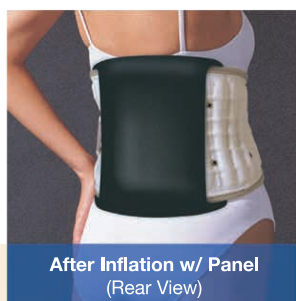
DDS 500 - LUMBAR TRACTION

THE MOST VERSATILE BRACE OF ITS KIND!

“Love your life without lower back and radiating pain!”



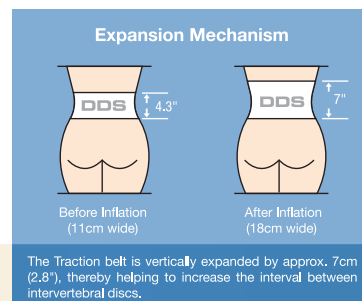
Before Inflation (Rear View)



After Inflation w/ Panel
(Rear View)



After Inflation w/ Panel
(Front View)



The process is simple: DDS acts to provide traction between the lower part of the rib cage and the upper part of the hip creating weight-bearing forces away from the lower back. By increasing the intervertebral disc space, pressure applied on the nerve root is relieved, thereby, eliminating pain while assisting active-rehabilitation. The vertically expandable columns create a virtual support beam providing spinal decompression for the lumbar vertebrae. Disc Disease Solutions will speed up your recovery and help you enjoy the daily activities that were once too difficult.

DDS is thin, lightweight and offers a high degree of mobility. It can be discreetly worn under clothing allowing you to perform daily activities such as driving, walking and standing for long periods of time, and enabling those with an active lifestyle to work, enjoy sports and other leisure activities pain-free.

The DDS 500 is the solution for patients who cannot tolerate the discomfort of a rigid body jacket yet require similar support. It is especially valuable for pre and post surgery, providing with equal stability as a stiff body jacket. As the patient progresses and requires less support, the detachable rigid panels can be removed to create a semi-rigid support with one or no support panels. It easily converts to a soft LSO and provides greater flexibility.

TYPICAL INDICATIONS

- Herniated, Bulging discs
- Lumbar acute/chronic sprain
- Spondylolysis and spondylolisthesis
- Low back pain caused by weight or strenuous jobs requiring heavy lifting
- Degenerative discs
- Spinal Stenosis
- Sciatica
- Congenital weakness in waist
- Compression fracture

1 AIR INJECTION NOZZLE

Allows simple connection to pump for inflation. Allows for very easy pressure adjustments and deflation.

2 100% COTTON LINING

Long-term comfort is provided by a high quality, natural, cotton lining. Protects skin and diminishes sensitive skin problems.

3 ONE-TOUCH ELASTIC, AUXILIARY BELT

Provides additional security with easy adjustments.

4 ANTERIOR AND POSTERIOR RIGID PANELS

Detachable panels...



Hand Air Pump

FEATURES OF DDS

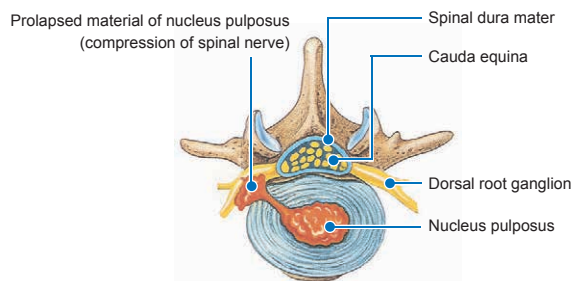


- Pain relief for patients with Herniated and Bulging Discs, Muscle Spasms, Sciatica, Spondylolysis and Spinal Stenosis
- Facilitate Remolding and Healing by reducing load off the spine
- Prevents Re-herniation
- Reduces pain medication
- Relaxes muscle spasms, muscles cramps, strain and pain
- Reduce low back pain caused by weight or strenuous jobs requiring heavy lifting or long hours of driving
- Helps maintain proper posture
- Can be worn discreetly under clothing
- Lessen the amount of pain for patients
- Helpful for pre-surgical pain problems

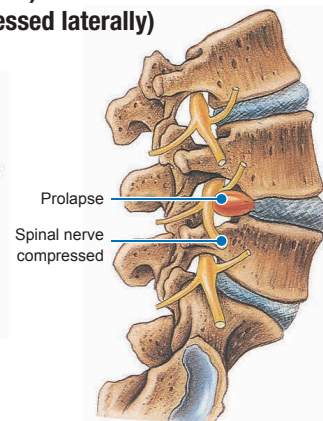
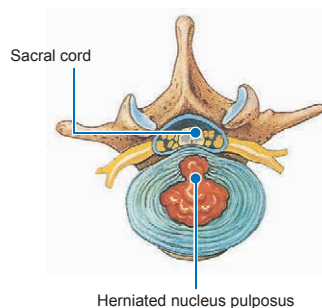


PRINCIPLE OF OPERATION

- **Before treatment:** The herniated or bulging intervertebral disc or herniated nucleus pulposus applies pressures on the nerve root, causing pain.
- **After treatment:** DDS helps resume the appropriate position of the intervertebral disc, or nucleus pulposus, by increasing the intervertebral space, thereby, reducing the pressure between the lumbar/cervical spine.



Herniated nucleus pulposus(disc) (Spinal nerves may be compressed laterally)



MORE FEATURES



DDS is manufactured under the following standards

- ISO 9001: 2000(International Quality Management System)
- ISO 13485 (International Quality System Medical Devices)
- EN 46002(European Quality System Medical Devices)
- CE Mark
- FDA ER No. 9611754 and Device Listing No. B 115761 in USA
- Notification No. BE/CA01/2-03702-000011 Belgium
- Notification No. Be/CA01/2-03702-00002 Belgium
- Clinical consultation: Department of Orthopedic Surgery, Inje University, Seoul Paik Hospital, Korea
- Korean Patent No. : 142202
- Japanese Patent No.: 2911437
- US Patent No.: 5980560
- International application No.:PCT/KR00/00368

DDS 500 SIZING CHART

SIZE	TORSO MEASUREMENT	PANEL SIZE
S	26-28 inches	S
M	29-32 inches	M
L	33-35 inches	M
XL	36-38 inches	M
2XL	39-41 inches	L
3XL	42-44 inches	L
4XL	45-48 inches	XL
5XL	49-51 inches	XL
6XL	52-55 inches	2XL
7XL	56-59 inches	2XL

*Measurement around the naval

*Extension piece available for larger sizes



Disc Disease Solutions, Inc.

100 Commerce Way, Suite 5, Hackensack, NJ 07601 U.S.A.

Tel: (888) 495-7440 Fax: (201) 880-7799

E-mail : info@discdiseasesolutions.com

www.DDSbelt.com