

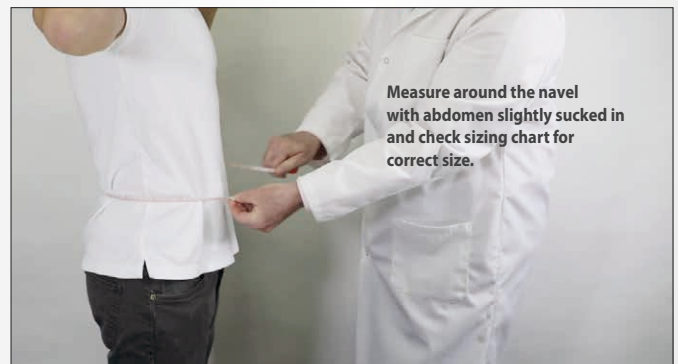


DDS 500 | DDS DOUBLE

User Guide for Custom Fitting

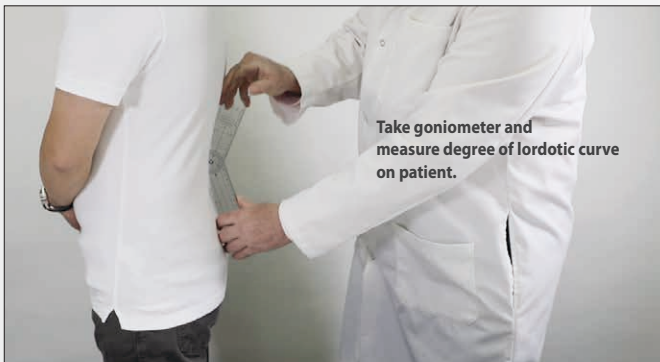


#1



Measure around the navel with abdomen slightly sucked in and check sizing chart for correct size.

#2



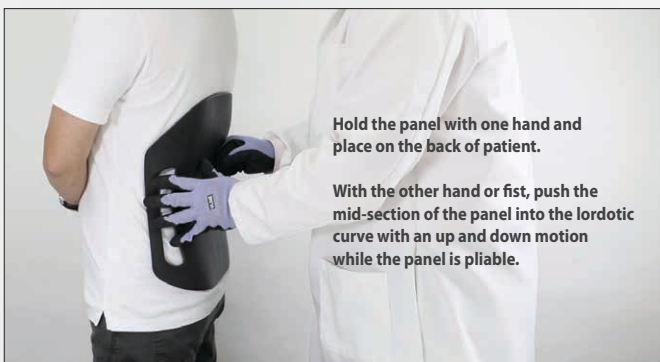
Take goniometer and measure degree of lordotic curve on patient.

#3



On a heat-resistant surface and in a well-ventilated area apply heat to the mid-section of the Back Panel for about 2~3 mins or until the panel becomes soft and pliable.

#4



Hold the panel with one hand and place on the back of patient.

With the other hand or fist, push the mid-section of the panel into the lordotic curve with an up and down motion while the panel is pliable.

#5



Check to see if the back panel measures to an approximate degree of lordosis with goniometer.

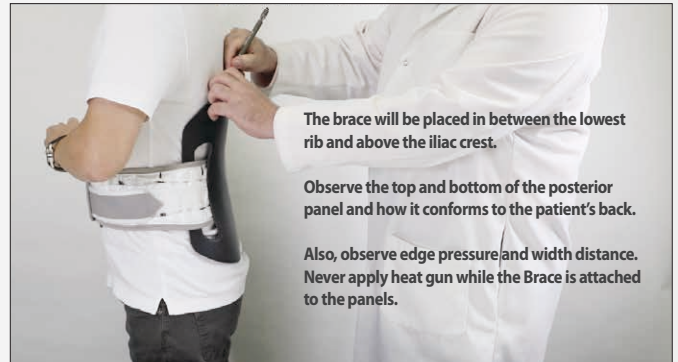
Repeat steps if necessary.

DDS 500 | DDS DOUBLE User Guide for Custom Fitting

#6



#7



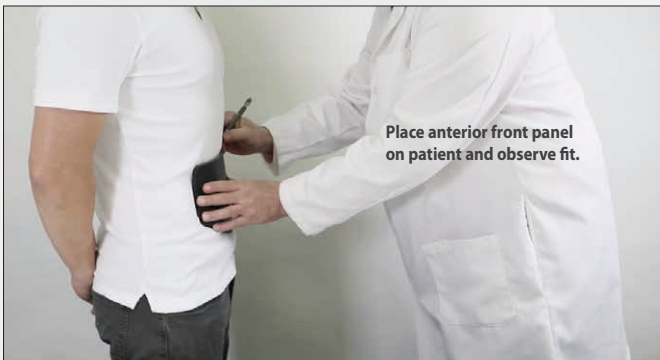
#8



#9



#10



#11



#12



#13

